



Signal lamp

Technical data

Signal lamp Type 418 8170

		Complete certificate ¹⁾	Component certificate
Marking accd. to 2014/34/EU		Ⓢ II 2 G Ex de IIC T6 Ⓢ II 2G Ex d ia IIC/IIB Gb	Ⓢ II 2 G Ex de IIC/IIB Gb Ⓢ I M2 Ex d e IIC/IIB Gb
EC-Type Examination Certificate		PTB 99 ATEX 1034	IBExU 12 ATEX 1047 U
IECEX Certificate of Conformity		IECEX IBE 14.0005 U	
Marking accd. to IECEx		Ex de IIC/IIB Gb Ex de I Mb	
Operating temperature range		-45 °C up to +68 °C (IIC) -60 °C up to +68 °C (IIB)	
Permissible ambient temperature		-55 °C up to +50 °C	
Application temperature ²⁾		-45 °C up to +60 °C (IIC) -60 °C up to +60 °C (IIB)	
Rated voltage	Ex ed IIC) (LED)	20 V up to 254 V AC/DC	20 V up to 254 V AC/DC
	(Ex d ia IIC)	10 V up to 30 V DC	10 V up to 30 V DC
	(Ex ed IIC)	12 V up to 24 V AC/DC	12 V up to 24 V AC/DC
Rated current	(20 V up to 250 V) (LED)	approx. 4 - 15 mA	max. 25 mA
	(10 V up to 30 V Ex d ia IIC)	max. 25 mA	max. 24 mA
	(12 V up to 24 V) DC	max. 24 mA	
max. value for Ex ia		U _i = 30 V DC, I _i = 100 mA, P _i = 750 mW	U _i = 30 V DC, I _i = 100 mA, P _i = 750 mW
Connecting terminals		2 x 2.5 mm ²	
Degree of protection accd. to EN 60529		IP66 ¹⁾	IP00
Dimensions (L x W x H)		147 x 38 x 67 mm	99 x 38 x 57 mm
Weight		0.20 kg	0.15 kg
Type of mounting		Ø 30.3 mm fixing hole	
Enclosure colour		grey	
Angle of rotation		270°	
Scale		0 - 100 %	

¹⁾ with protective cover IP66

²⁾ The limits of the operating temperature range and the max. permissible temperature rise of the components have to be taken into account. See also pages 2.4.34/35.

Ex-signal lamp for panel mounting



Signal lamp

4 Ordering code for component (Code 2) - code A - B

Code A B
 Order No. GHG 481 81710 R00 —

Ordering code for component (Code 2) - code A - B

Code	Component	Code
A	Signal lamp	GHG 418 8170 R00
Code	Voltage	Code
B	20 V - 254 V AC/DC	51
	10 V - 30 V DC (Ex-i ¹⁾)	52
	12 V - 24 V AC/DC	53

Example for ordering code (Code 2)

Content	Order No.	
	A	B
Version without protective cover with lens cover yellow, red, green and white		
Universal voltage 20 V - 254 V AC/DC	GHG 418 81 70 R00	51
For intrinsically safe circuits (10 V up to 30 V DC)1)	GHG 418 81 70 R00	52
Low voltage 12 V up to 24 V AC/DC	GHG 418 81 70 R00	53

¹⁾ Supply by valve-driver components, e.g., with data

$U_o = 20\text{ V} - 28\text{ V DC}$ with $R_i = 200\ \Omega - 500\ \Omega$ or $U_o = 10\text{ V} - 18\text{ V DC}$ with $R_i = 100\ \Omega - 200\ \Omega$

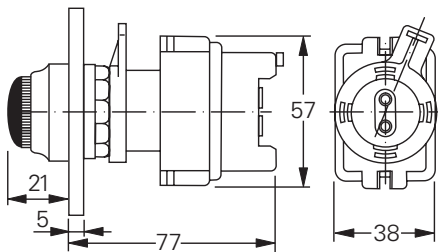
No effective Ci and Li values.

Accessories

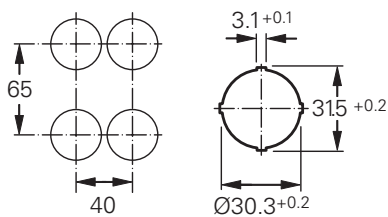
Type	OU	Order No.
Protective cover to meet IP66	5	GHG 410 1939 R0002

Please pay attention that only order units (OU) according to the ordering details can be delivered.

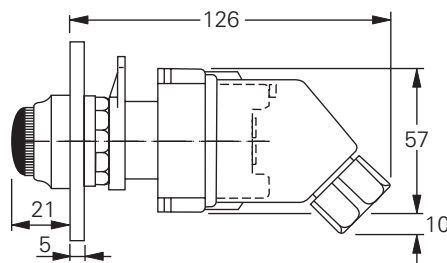
Dimension drawing



Signal lamp without protective cover



Minimum distances



Signal lamp with protective cover

Dimensions in mm